



The
NEXT LEVEL OF
IMAGE QUALITY



2021

www.pulsar-vision.com



Table of
Contents

The information in this Catalogue is subject to change without notice and should not be construed as a commitment by the manufacturer. The manufacturer assumes no responsibility for any errors that may appear in this Catalogue.

Stream Vision

Stream Vision Applications	3
----------------------------------	---

Riflescopes

Thermion Thermal Imaging Riflescopes	8
Trail 2 LRF Thermal Imaging Riflescopes	13
Digex Digital Night Vision Riflescopes	16
Digisight Ultra LRF Digital Night Vision Riflescopes	24

Front Attachments

Krypton Thermal Imaging Monoculars / Front Attachments	28
Proton Thermal Imaging Monoculars / Front Attachments	32
Forward Digital NV Monoculars / Front Attachments	35

Monoculars

Helion 2 Thermal Imaging Monoculars	38
Axion Thermal Imaging Monoculars	43

Binoculars

Accolade 2 LRF Thermal Imaging Binoculars	48
---	----

Accessories

Pulsar Accessories	53
--------------------------	----



Unique, cutting-edge mobile application that binds together opto-electronics and Android or iOS mobile devices to offer a symbiosis of advanced optic capabilities and the latest digital features. Using standard WiFi, a smartphone or tablet easily connects to Stream Vision compatible Pulsar thermal and digital night vision optics to stream images directly to your personal device, change device settings, view recorded files, update firmware and control the optic remotely.

New digital technologies invade, enhance and raise standards in every aspect and sphere of our lives. Today, with literally billions of people in every corner of the globe engaged in constant virtual contact with each other, developing cross-platform devices is more important than ever. Like a smartphone, once simply a means of verbal and text communications but now a multi-purpose, multi-tasking instrument for business and social relations, Pulsar's innovative line of night vision and thermal optics deliver valuable work and entertainment information.

Pulsar continues to develop feature-rich devices focused on high-resolution image quality, ergonomics and world-class reliability. We understand that now, more than ever, ease of interface and multi-vector use are equally important. Stream Vision solves this task by providing a symbiosis of software and hardware platforms designed to connect personal Android and iOS devices, i.e. smartphones, tablets, etc. to Pulsar thermal imaging and digital night vision devices via Wi-Fi.



STREAM YOUR DISCOVERIES



STREAM VISION



Continuous Improvement

We work constantly to refine digital night vision and thermal imaging firmware to enhance user experiences. Users with Stream Vision compatible electro-optics can always update firmware and add features.



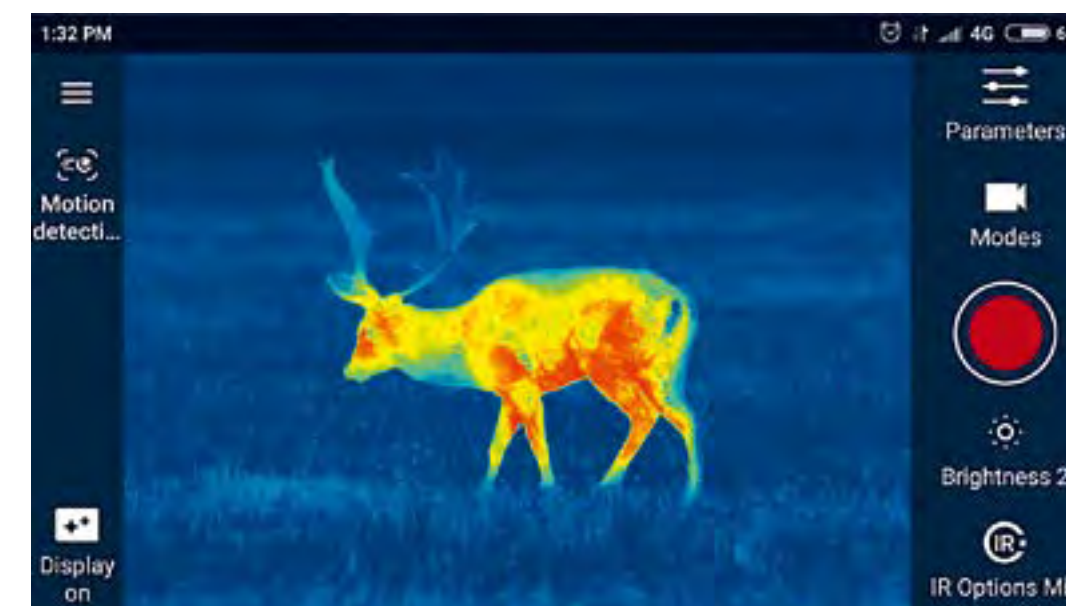
Photo and Video Recording

Photo and video recording can be initiated from your WiFi connected smartphone or tablet without interrupting through-optic observation. Files can be stored in the optic's internal memory or directly to your connected device.



Mobile Viewfinder

Watch your device's display in real-time. Stream Vision turns your WiFi connected smartphone or tablet into a mobile viewfinder.



File Sharing

Download recorded photos and videos with the Stream Vision app and share them with friends via online messaging and cloud services.



Live-Stream Platform

Live-stream video content from the thermal or digital night vision device directly to YouTube and Facebook via your WiFi connected smartphone or tablet.



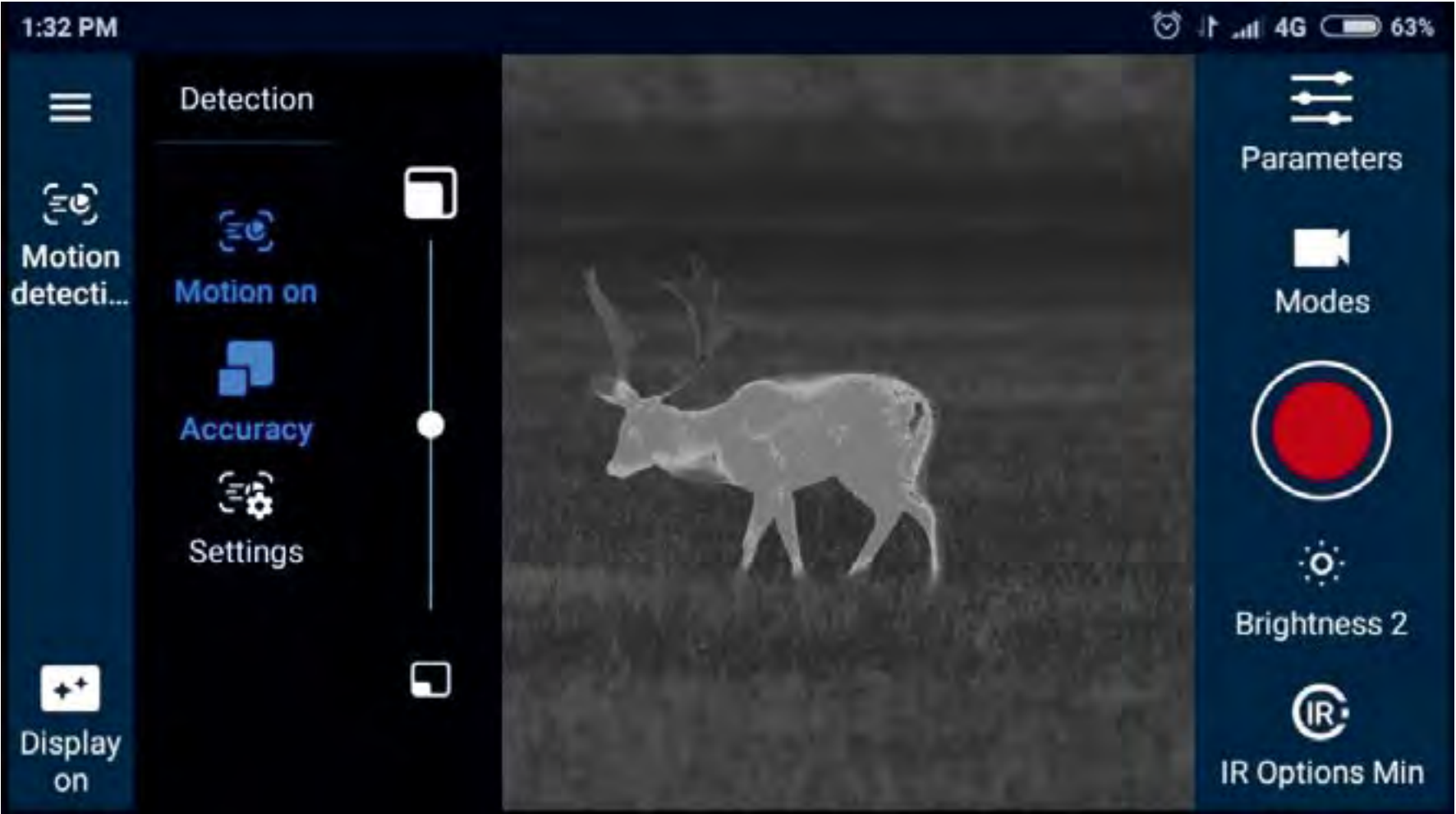
Firmware Update

Stream Vision makes checking for available firmware updates quick and easy. When your smartphone or tablet is connected to a device, Stream Vision even handles installation.



Remote Control

Stream Vision turns your smartphone or tablet into a fully functional remote control. Adjust settings and execute device commands without operating onboard controls.



Motion Detection

Using your WiFi connected smartphone or tablet with a Stream Vision App compatible thermal or night vision device easily turns your optic into a motion-detecting camera. The optic must be in a fixed position. Users are notified of motion detected in the field of view by sound and vibration alerts, as well as imaging. Settings help avoid false alarms.



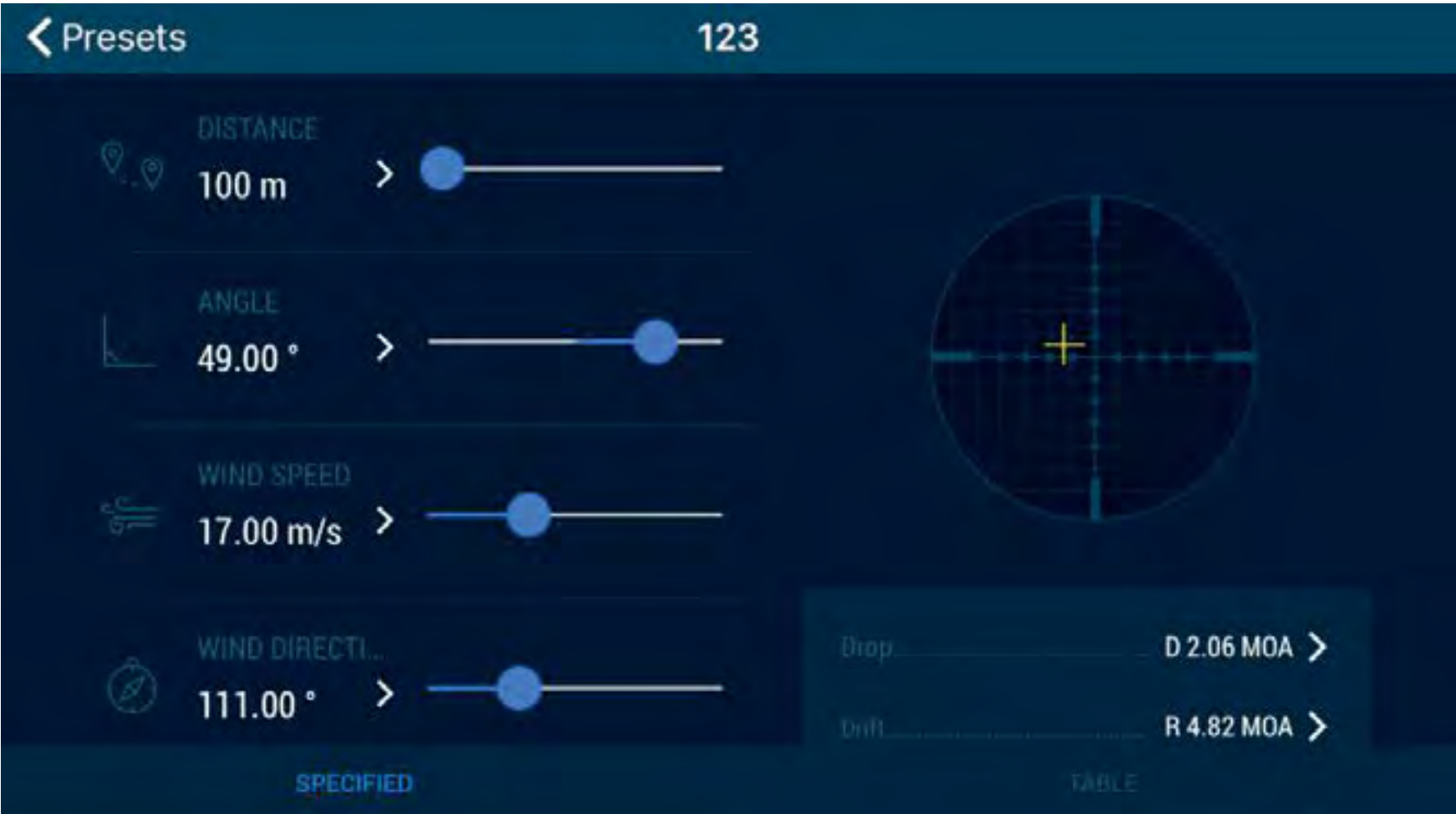
Completely Free

Stream Vision is ad free and FREE, period. We see Stream Vision as a logical, integral, experience-enhancing and functional extension of your compatible device.



No Ads

No ads. No distraction. Even with easy user interface we know using Stream Vision and operating electro-optics requires attention and concentration.



Ballistic Calculator

Stream Vision's onboard ballistic calculator is a powerful tool for precision long-range shooters. Select your ammo from Stream Vision's robust database or create your own ammo profile. Save ballistic profiles, including rifle, optic and cartridge combinations. Stream Vision's proprietary high-precision algorithms, developed by skilled professionals, result in exacting correction calculations based on ballistic parameters, distance to target and real-time environmental conditions like wind speed and direction, temperature, air pressure, humidity, elevation and angle.



Mobile App STREAM VISION 2



The free Stream Vision 2 mobile application is a powerful mobile client expanding the features and use scenarios of thermal imaging, digital night vision and multispectral electro-optic devices from PULSAR and YUKON. The application enriches the functionality of electro-optic devices by allowing them to work in combination with smartphones using Android or iOS platforms. Linking the electro-optic device via a Wi-Fi connection with a smartphone enables the smartphone to act as a file browser, viewfinder for direct unit-to-phone image streaming, remote control for changing unit's settings on-the-go, firmware update platform, and offers many more functions. After registration in the application, the user gets free space in the Stream Vision 2 Cloud for storage of both photos and videos. Stream Vision 2 gives an opportunity to receive the latest news about technologies and happenings in the world of night vision and thermal imaging.



Remote Control

Control and adjust the settings of your thermal imaging or digital night vision device in the Stream Vision 2 App. See all changes in real-time in the viewfinder and make necessary corrections on-the-go.



Photo and Video Browser

Browse all photos and videos recorded in on your thermal or digital night vision device. Download the files to your smartphone and share them with your friends.



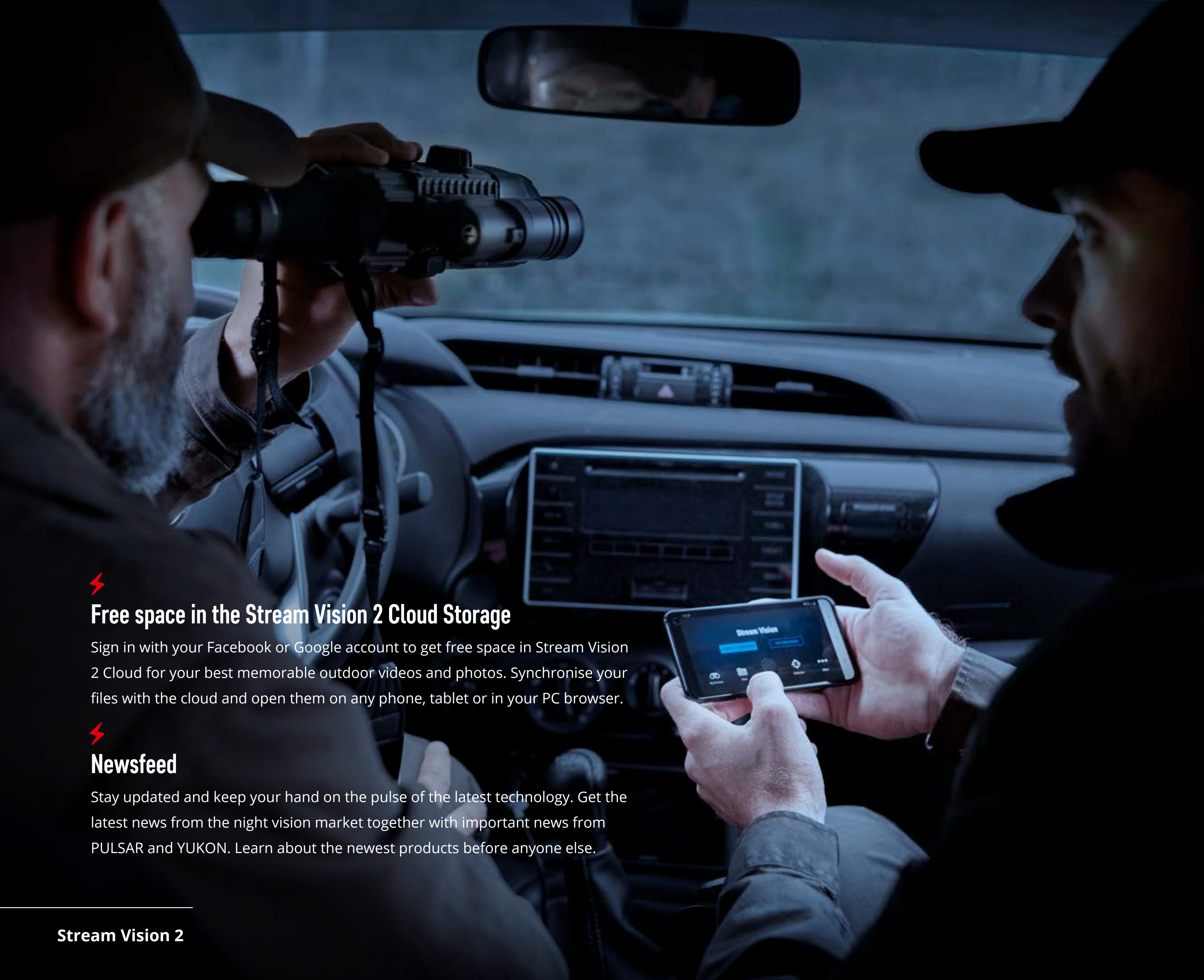
Firmware Update

Keep your Pulsar or Yukon optic device up-to-date and receive all the latest features and firmware enhancements. Use your Stream Vision 2 App to check and download the latest firmware for your device. Update your unit with downloaded firmware and enjoy new features.



Remote Real-Time Image Viewing

See a real-time image from your electro-optic device in the screen of your smartphone, allowing you to record footage and take photos.



⚡

Free space in the Stream Vision 2 Cloud Storage

Sign in with your Facebook or Google account to get free space in Stream Vision 2 Cloud for your best memorable outdoor videos and photos. Synchronise your files with the cloud and open them on any phone, tablet or in your PC browser.

⚡

Newsfeed

Stay updated and keep your hand on the pulse of the latest technology. Get the latest news from the night vision market together with important news from PULSAR and YUKON. Learn about the newest products before anyone else.

FEATURES	SV	SV2
Device settings control	+	+
File browser	+	+
Cloud Storage		+
Automatic photo/video sync with cloud		+
Firmware update	+	+
Direct YouTube Streaming	+	
Motion detection	+	Coming Soon
Newsfeed		+
Ballistic calculator	+	Coming Soon
Portrait orientation		+

⚡

Supported Devices

SV	SV2
Accolade, Axion, Digisight Ultra, Digex, Forward, Helion (all versions), Krypton, Proton, Thermion, Trail (all versions).	Digex, Digisight Ultra N400th, Forward F400th, Helion 2 XQ, Helion 2 XP50 Pro, Krypton, Proton, Thermion, Trail 2 series.

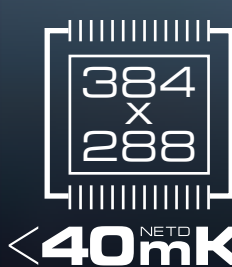
THERMAL
IMAGING

NEW Thermal Imaging Riflescopes

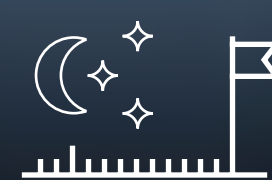
THERMION 2



<25mK



<40mK



1800m



30mm



F/1.0

XP50 / XQ38 / XQ50

Fast Aperture f1.0 Germanium Optics

Quality fast aperture germanium optics ensures optimal heat energy transmissivity minimizing noise and improving detail of observed scene.



Mounts on Standard 30 mm Scope Rings

Designed from the ground up for ease of use, Thermion riflescopes mount to standard 30 mm scope rings. No specialized tools or equipment are required.



< **25**^{NETD}**mK**

Super Sensitive Thermal Imaging Sensor

Thermal imaging sensor with NETD <25mK* ensures perfect detail recognition even in the hardest weather conditions when thermal contrast is low. The smallest temperature differences will be clearly visible during the rainfall, fog or cold mornings in the most difficult conditions for thermal imager.

* - Thermion 2 XP. Thermion 2 XQ models feature a NETD <40mK thermal sensor.



Extreme Detection Range 1800 m

High quality germanium optics coupled with an advanced thermal imaging sensor ensure an unprecedented detection range of up to 1800 meters even in complete darkness.



Stream Vision App Supported

Using Wi-Fi and the Stream Vision App, connect the Thermion to a smartphone or tablet for use as a second display or remote control. also makes transferring recorded files, adjusting settings, upgrading firmware.



Mobile App
**STREAM
VISION 2**



ANDROID APP ON
Google play



Available on the
App Store



Image Boost Technology

Pulsar's proprietary Image Boost Technology is comprised of software algorithms designed to increase imaging clarity and overall image detail. Image Boost results in a sharper, more detailed field of view and enhanced object identification capabilities.



IPX7 Waterproof-Rated

for protection from heavy rainfall, snow or other precipitation. The Thermion is designed to run flawlessly, even after submersion in up to 1 meter of water for up to 30 minutes.



Full-Color, HD AMOLED Display

While the Thermion's HD AMOLED display delivers crisp, richly contrasted, vividly colored field of view, AMOLED technology ensures flawless, fluid, high-resolution imaging and power saving.



B-Pack Mini Combined Power System

Thermion riflescopes utilize a dual battery system consisting of internal and external rechargeable batteries. While the external battery offers extended operation time, it can also be replaced in seconds without powering down the device.



Rugged, Reliable All-Metal Housing

Designed for rugged reliability, Thermion riflescopes boast full, reinforced yet lightweight metal construction. Precision-fabrication of housing elements ensures flawless field performance.



Customizable Reticle Options

Wide array of color-customizable reticles, including scalable ballistic styles. Color options: black, white, red, green, yellow, blue and orange.



Zeroing Profiles Management

Store up to five zeroing profiles, with ten distance coordinates each for varying situations, in internal memory for quick rifle change-outs and on-the-fly adjustments.



Recoil Rated up to .375 H&H, 12-Gauge and 9.3x64

Recoil rated up to 6000 joules for flawless performance on larger calibers up to .375 H&H, 12-gauge and 9.3x64.



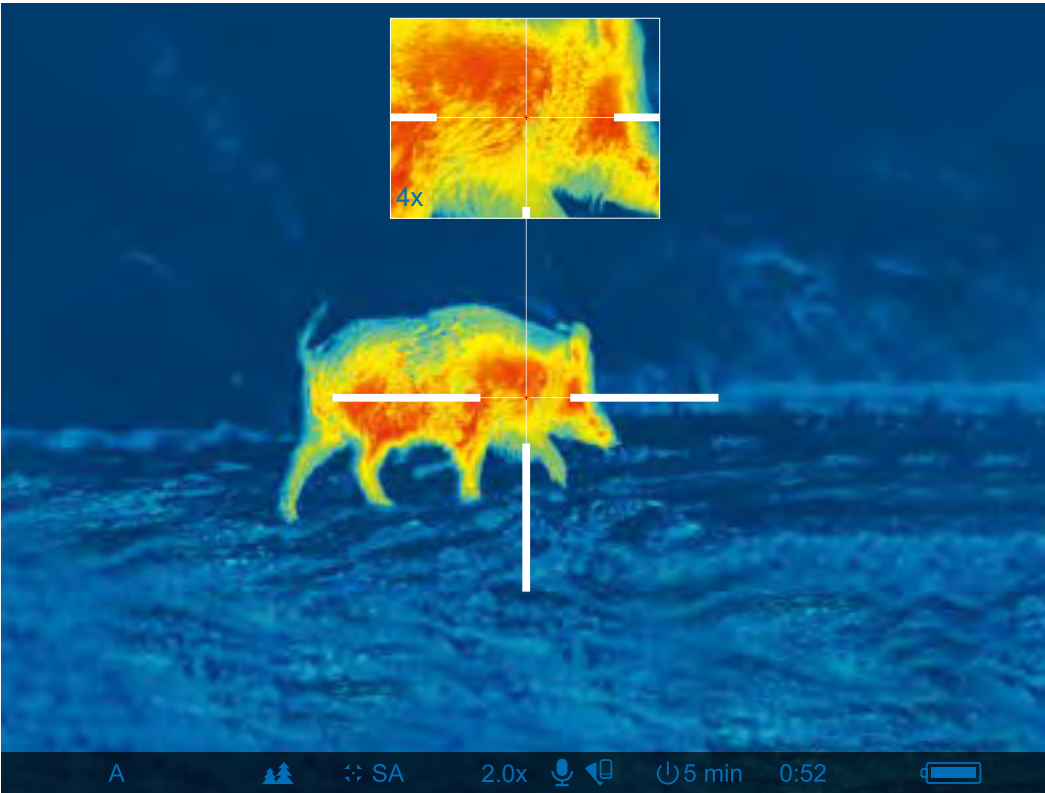
Video and Still-Photo Recording

Integrated video (including recoil-activated) and still image recording in MPEG-4 and .jpg makes sharing the thermal action quick and easy. The onboard 16-GB internal memory handles recoil flawlessly and stores hours of video or thousands of photos.

⚡

Picture-in-Picture

Picture-in-picture displays a magnified image at the top-center 10% of the overall field of view for precise shot placement.



⚡

Color Palettes

Color palettes offer customized display options. While white hot and black hot are most popular, Red Hot, Rainbow and Ultramarine highlight a heat signature’s more intense hot spots. Violet, Red Monochrome and Sepia are optimal palettes for reduced eye fatigue over long periods of observation.

⚡

Variable Digital Zoom

Digital zoom, up to 8x, provides improved focus and overall target recognition at significant distances.

TECHNICAL SPECIFICATIONS	Model	2 XP50	2 XQ50	2 XQ38	XM50	XM30
	SKU	76544	76546	76545	76526	76524
	Microbolometer, resolution, pixels @ pixel pitch, μm	640 x 480 @17	384 x 288 @17		320 x 240 @ 12	
	Display, type / resolution, pixels	HD AMOLED 1024 x 768				
	Objective lens	F50/1.0	F50/1.0	F35/1.0	F50/1.2	F30/1.2
	Magnification, x	2 – 16	3.5 – 14	2.5 – 10	5.5 – 22	3.5 – 14
	Field of view (horizontal), °	12.4	7.5	10.7	4.4	7.3
	Range of detection, m	1800		1350	2300	1300
	Operating temperature, °C	-25 to +50				
	Weight, kg	0.9				0.75

THERMION

XM Series

⚡

Thermion XM50

- Unprecedented detection range up to 2300 meters
- High magnification from 5.5 to 22x

⚡

Thermion XM30

- Lightweight & compact
- Optimal magnification / FOV ratio

THERMAL
IMAGING



Thermal Imaging Riflescopes

TRAIL 2 LRF

2 LRF XQ50 / XP50

The
NEXT LEVEL
OF THERMAL
PRECISION

<40^{NETD}mK

Highly Sensitive Thermal Imaging Sensor

An advanced NETD <40 mK sensor produces precise detail recognition imaging even in adverse weather conditions like rain and fog. Even when thermal contrast is low, small temperature differences are clearly visible with richly contrasted, high-resolution imaging.



Shockproof Magnesium Alloy Housing

Rugged and light-weight magnesium alloy housing is designed to withstand recoils of high caliber rifles. Increased structural rigidity reduces vibrations during the shot and leads to enhanced ballistics while properties of magnesium alloy help to ensure better heat dissipation.



Instant Start-Up

Thanks to advanced electronics, the Trail 2 LRF can be powered up almost instantly. Rapid start-up conserves device energy and prolongs overall battery life while ensuring you don't miss a shot opportunity when seconds count.



Image Boost Technology

Pulsar's proprietary Image Boost Technology is comprised of software algorithms designed to increase imaging clarity and overall image detail. Image Boost results in a sharper, more detailed field of view and enhanced object identification capabilities.



Full-Color, HD AMOLED Display

Trail 2 LRF's new HD display delivers crisp, richly contrasted, vividly colored field of view, AMOLED technology ensures flawless, fluid, high-resolution imaging and power saving.



High Recoil Resistance Rating: 12 gauge, 9.3x64, .375 H&H Shock Resistance

The Trail features exceptionally high shock resistance, capable of handling high-powered firearm recoil, up to .375-cal., including smoothbore and airsoft.



Observation Modes

Image optimization should be performed depending on the environmental location and conditions. Mountains, fields and forests have different ambient temperatures. In order to achieve the highest possible image quality, certain settings have been optimized and gathered into profiles. As a result, optimized imaging in various conditions is easier. Identification preset is another optimal-imaging option that makes identifying easier, even at longer distances.



Integrated Laser Rangefinder

Precision shooting begins with knowing the distance to your target. The Trail LRF features an integrated laser rangefinder capable of capturing and displaying target distances accurately, within ± 1 m, up to 1000 meters.



Fully Waterproof

IPX7 waterproof-rated protection ensures the Trail performs perfectly in wet weather, even during intense rain, snowfall and submersion in 1 meter of water for up to 30 min. (IEC 60529).



Wi-Fi. Integration with IOS and Android devices

Built in Wi-Fi module provides connectivity of Trail 2 LRF with Android or iOS smartphones or tablets. The smartphone and thermal riflescope combination offers a set of unique features such as direct image streaming, downloading and sharing recorded files, firmware update capabilities and many others.



50 Hz

High Image Frequency

At a high refresh rate of 50 Hz, the Trail provides comfortable viewing throughout dynamic, rapid motion.



B-Pack Power Supply

Trail includes a progressive autonomous B-Pack power supply consisting of a quick-detach, rechargeable IPS7, 6.4 Ah battery pack designed to deliver over 10 hrs. of operation on maximum mode. Higher-powered IPS14 battery pack, as well as AA battery case, also are available and provide a perfect off-the-grid power solution.

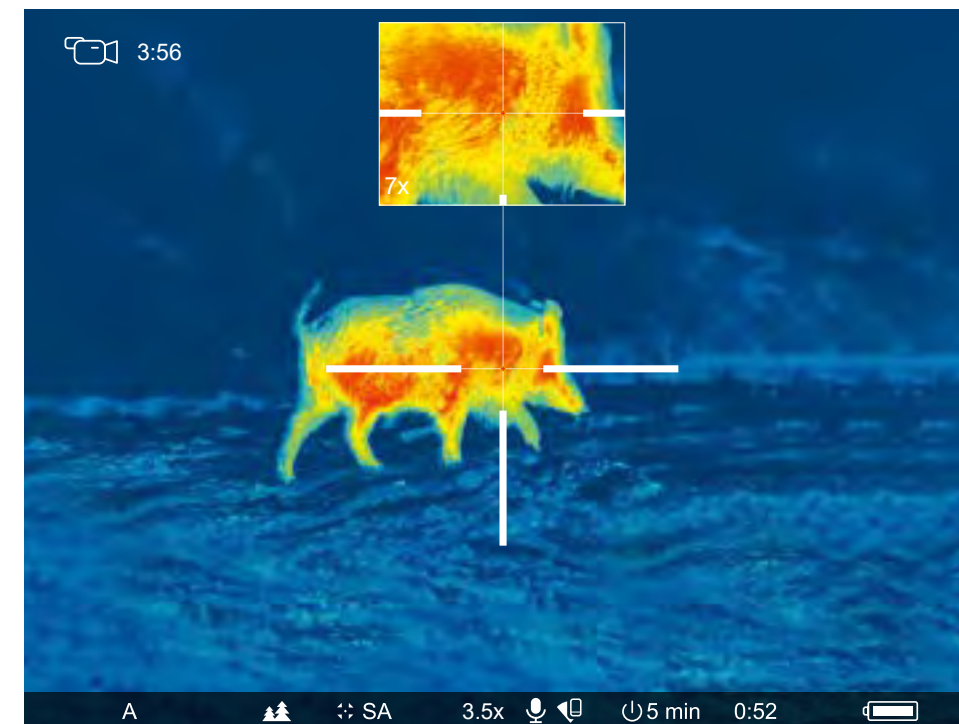
Variable Magnification

Trail models include variable magnification, up to 8x depending on model, and feature both 2x step-up and smooth, graduated magnification for a truly optimum, customized field of view.

Built-In Accelerometer / Gyroscope

A built-in accelerometer/gyroscope improves accuracy by precisely identifying cant and angles greater than 5° with an arrow indicating the direction and degree of lateral tilting. Increased angles are denoted with additional arrows. Moreover, the riflescope can be set to auto shutdown when resting in a non-shooting position. Unit operation may be disabled when the vertical angle is greater than 70° or horizontal angle is greater than 30°. The accelerometer feature may be temporarily disabled for continued use at excessive angles.

Picture-in-Picture Mode



Picture-in-Picture improves accuracy by providing a magnified image of the reticle area at the top of the display. With only 1/10 of the display area reserved for PiP, the field of view remains virtually unobstructed for simultaneous PiP and FOV viewing.

-25°C

Wide Range of Operating Temperatures

With a frost-resistant AMOLED display, Trail thermal imaging riflescopes are designed to deliver flawless performance at an extreme temperature range of -25°C to +50°C.

Display Off

During short periods of inactivity and better concealment, Display Off powers down the display without interrupting other operating functions. Using Display Off means a much faster restart time when you need it most.

⚡

Zeroing Profiles Management

Store up to five zeroing profiles, with ten distance coordinates each for varying situations, in internal memory for quick rifle change-outs and on-the-fly adjustments.

⚡

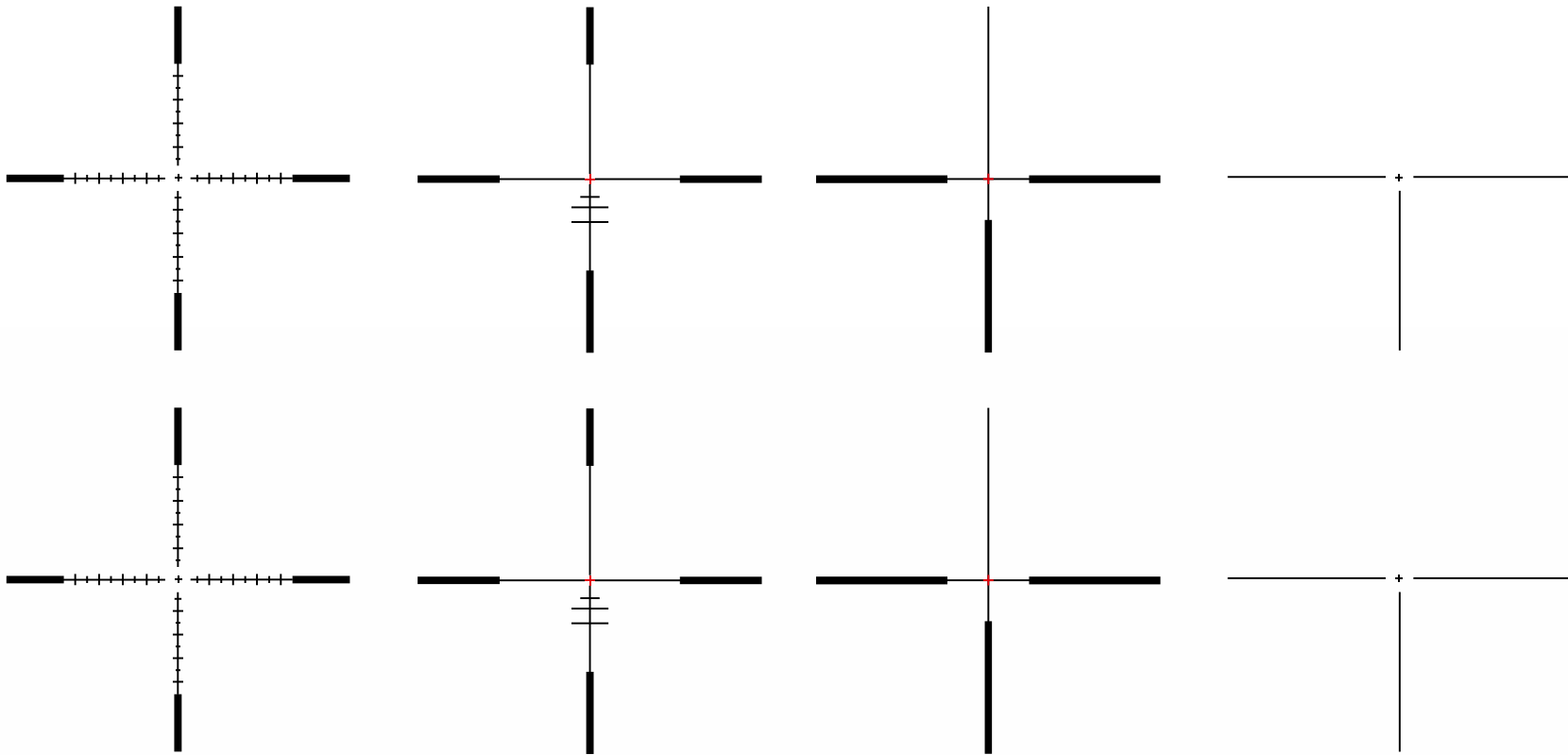
Built-In Video Recorder

Capturing still images and video is seamless with the Trail’s built-in video recorder. Image and video content is stored internally and can easily be transferred to PC / laptop via wired connection or Wi-Fi.

⚡

Selectable Reticles

A full complement of digitally displayed reticle solutions ensures quick target acquisition and a richly contrasting sight picture. Choose from an array of reticle patterns, colors and brightness settings.



TECHNICAL SPECIFICATIONS	Model	XQ50	XP50
	SKU	76558	76559
	Microbolometer, resolution, pixels @ pixel pitch, μm	384 x 288 @ 17	640 x 480 @ 17
	Objective lens	F50/1.2	
	Display, type & resolution	Full-color HD AMOLED 1024 x 768	
	Magnification, x	3.5 - 14	2 - 16
	Field of view (horizontal & vertical without zoom), °	7.5 x 5.6	12.4 x 9.3
	Integrated laser rangefinder	yes	
	Range of detection, m	1800	
	Weight (without mount), kg	0.8	

DIGITAL
NIGHT VISION

Digital
Excellence



N450 / N455

Digital Night Vision Riflescopes
DIGEX



Supplied Powerful Long-Range IR Illuminator

Digex riflescopes are supplied with a detachable, high-power, 850-nm or 940-nm IR illuminator. While an 850-nm is built for distance, the 940-nm is completely stealth, ensuring you remain undetected no matter the species of game you pursue.



Easy Mounting on a Rifle

The middle part of the Digex body is a 30 mm tube, standard for daylight optical sights. This form-factor enables the Digex to be flexibly mounted on various types of hunting weapons using proven solutions.



User Friendly Controls

Digex is easy to use. Turn on-off, video recording, zoom setup and PiP mode are activated by dedicated buttons easily accessible on the upper part of riflescope's housing. Other functions are managed by the controller, which operates as both a wheel and button.

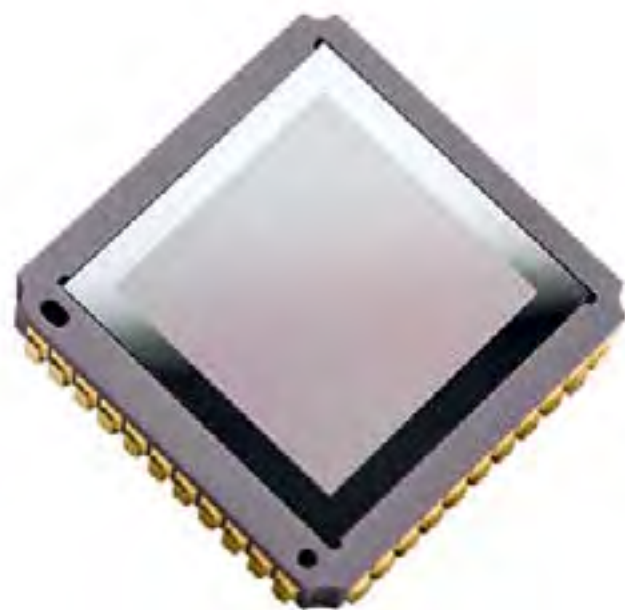


Integrated Video and Sound Recorder

Digex riflescopes feature a built-in recorder to capture still images and HD quality videos with sound. Footage can be transferred to PC/laptop or mobile device via a wired connection or via Wi-Fi.

HD-sensor

The highly sensitive 1280x720 HD CMOS sensor ensures that Digex delivers a high definition image with precise detail rendering.



IPX7

Fully Waterproof

IPX7 waterproof-rated for protection from rainfall, snow or other precipitation. The Digex is designed to run flawlessly in rain of any intensity, including submersion in up to 1 meter of water for up to 30 minutes.

Robust All-Metal Housing

Designed for rugged reliability, Digex riflescopes boast full, reinforced yet lightweight metal construction. An anti-wear coating and precision fabrication of housing elements ensure the Digex looks good through years of flawless performance.

Compound Continuous Power System

Digex riflescopes are powered with two rechargeable batteries: one built-in and the other replaceable located in the battery compartment. Upon discharge of the battery in the battery compartment, the riflescope switches automatically to the built-in battery. The replaceable battery can be removed and replaced in a matter of seconds. Then the riflescope switches to the replaceable battery without intermediate shutdown.





Over 500 m Nighttime Detection Range

Digex's combination of best-in-class nighttime sensitivity, HD-resolution display and sensor, rapid frame rate, high magnification power, wide selection of brightness and contrast settings, powerful built-in IR illuminator and long detection range (450 – 550 m) make it the perfect tool for detecting wildlife in low-light/no-light environments.



Software Sensitivity Enhancement Algorithm SumLight

SumLight function increases sensor sensitivity which allows passive observation (without IR) in low light conditions and at night. The software automatically activates algorithms (such as summing adjacent pixel signals, frame addition), thus increasing sensitivity while preserving good image quality.

Over 10 Different Reticle Types in Various Color Options

Digex riflescopes are equipped with ten reticle options in nine colors for a customized shooting experience. Options include scalable and standard ballistic and shot-type reticles.



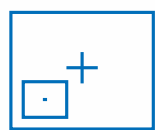


Wi-Fi. Integration with IOS and Android devices

Built in Wi-Fi module provides connectivity of Digex with Android or iOS smartphones or tablets. The smartphone and digital night vision riflescope combination offers a set of unique features such as direct image streaming, downloading and sharing recorded files, firmware update capabilities and many others.



More Features:



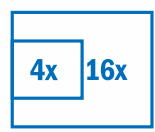
Picture-in-Picture Mode



Operating Temperatures
-25°C to +50°C



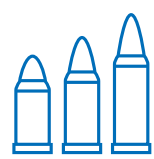
5 Individual Shooting Profiles /
50 Zeroing Distances



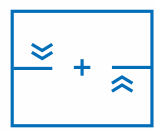
4x-16x Variable Magnification



Stadiametric Rangefinder



High Caliber Recoil Resistance:
12 Gauge., 9.3x64, .375H&H



Side Incline Indication



Customizable Automatic Shut-Down



Scalable Ballistic Reticles



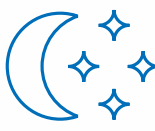
Instant Start-up
(3 sec)



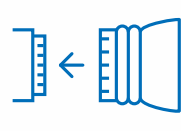
Accurate Zoom Zeroing
(click value less than 0,1 MOA)



Wide-angle Eyepiece
(29.5°)



Enhanced Nighttime Sensitivity



Removable Eye Cup with Magnet Fixing

TECHNICAL SPECIFICATIONS	Model	N450	N455
	SKU	76641	76642
	Sensor type / resolution, pixels	HD CMOS 1280 x 720	
	Display type / resolution, pixels	HD AMOLED 1024 x 768	
	Magnification, x	4 – 16	
	Field of view (horizontal), °	6.5 (at 4x)	
	IR illuminator, type / wavelength, nm	LED / 850 (long-range)	LED / 940 (invisible)
	Detection range, m	550	500
	Dimensions, mm	388 x 78 x 78	
	Weight, kg	0.95	



DIGITAL
NIGHT VISION



Enhanced Nighttime Sensitivity

The DigiSight Ultra uses proprietary software, cutting-edge electronic components and signal-processing algorithms to deliver one of the industry's highest values of sensitivity in infrared spectrum (nighttime sensitivity). The result is a device offering flawless passive-mode performance in deep twilight, even night, without switching on IR illumination. High sensitivity in the range of 900-950 nm makes it possible to use DigiSight Ultra riflescopes with invisible IR illuminators.

DIGISIGHT ULTRA LRF

Digital Night Vision Rangefinding Riflescopes



Over 500 m Nighttime Viewing Range

High nighttime sensitivity, high-resolution display and sensor, wide selection of brightness and contrast settings, robust magnification and a powerful IR illuminator combine to provide the perfect tool for hunting in complete darkness and detection of mid- to large-size predators and game animals at distances up to 450 – 550 meters.

N450 / N455



Picture in Picture Mode

Picture-in-Picture improves accuracy by providing a magnified image of the reticle area at the top of the display. With only 10% of the display area used by PiP, the field of view remains virtually unobstructed for simultaneous PiP and FOV viewing.



Scalable Ballistic Reticles

Like first focal plane reticles, Digisight Ultra reticles scale proportionally with device magnification changes. Reticle subtension values remain unchanged throughout the Digisight's full range of magnification, allowing for quick, easy ranging and adjusting at varying distances.



Variable Magnification from 4.5x to 18x

The Digisight Ultra features both optical magnification and 4x digital zoom ranging from 4.5x to 18x. The zoom changes in 2x steps or continuously for a truly optimum, customized field of view.



Integrated Video and Sound Recorder

Capturing still images and video is seamless with the Digisight Ultra's built-in video recorder. Image and video content is stored internally and can easily be transferred to PC/ laptop via wired connection or wirelessly to your smartphone or tablet with the iOS and Android compatible Stream Vision App.



Instant Start-Up

Digisight Ultra starts up within three seconds after ON button is pressed.



Integrated Laser Rangefinder

Extra precise shooting requires an exact knowing of distance. Integrated laser rangefinder allows to measure distance in single measuring mode and in scanning mode with precision up to ± 1 meter. In the conditions of changeable landscape, when shooting from high stands it is recommended to use THD (True Horizontal Distance) measuring mode – in this mode rangefinder, taking into account angle of shooter's elevation relative to a target (AoE; its value is also displayed on the screen) calculates true horizontal distance to an object.



Wide-Angle Eyepiece

While complex in design, the Digisight Ultra's six-lens eyepiece increases your field of view by 20% over previous Digisight Ultra models. The eyepiece, combined with an HD AMOLED display, delivers a richly contrasted high-resolution image.



HD-Sensor

The highly sensitive CMOS sensor featuring 1280x720 HD resolution delivers a high definition image with precise detail rendering.



5 Individual Shooting Profiles / 50 Distances

Create up to five shooting profiles for multiple rifles and cartridges, with up to ten zeroing distances.



High Caliber Recoil Resistance: 12 gauge., 9.3x64, .375H&H

Recoil rated for high-powered calibers such as 12-gauge, 9.3x64, .30-06, .300 and .375 H&H, as well as smooth-bore and airsoft systems.



Accurate Zoom Zeroing

Digisight riflescopes can be zeroed at base magnification or while zoomed in on your target without worrying about reticle shift. Note: Windage and elevation click values decrease as zoom increases. At maximum magnification, adjustments are at 0.1 MOA.



Quick-Change Long-Life Rechargeable Battery Packs

Digisight Ultra LRF uses an advanced self-contained autonomous B-Pack power supply system. The rechargeable battery IPS7A (6.4 Ah) fits into a special slot in the riflescope's body without protruding and delivers over 8 hrs. of operation from a single charge in the maximum consumption mode. Quick-release and wireless design, long operating time are the major highlights of this power system.





Additional Features:

- Powerful Long-range / Invisible IR Illuminator
- 10 Reticle Shapes in Various Color Options
- Extreme Operating Temperatures (-25°C to +50°C)
- Fully Waterproof IPX7
- Side Incline and Elevation Angle Sensor
- Software Sensitivity Enhancement Algorithm SumLight
- Updatable Software



Wi-Fi. Integration with IOS and Android devices

Built in Wi-Fi module provides connectivity of Digisight Ultra LRF with Android or iOS smartphones or tablets. The smartphone and digital night vision riflescope combination offers a set of unique features such as direct image streaming, downloading and sharing recorded files, firmware update capabilities and many others.



Mobile App

STREAM VISION 2

ANDROID APP ON

Google play

Available on the

App Store

TECHNICAL SPECIFICATIONS	Model	N450 LRF		N455 LRF
	SKU	76627		76628
	Sensor type / resolution, pixels	CMOS 1280 x 720		
	Display type / resolution, pixels	HD AMOLED 1024 x 768		
	Magnification, x	4.5 – 18		
	Field of view (horizontal), °	6.2 (at 4.5x)		
	IR illuminator, type / wavelength, nm	LED / 850 (long-range)		LED / 940 (invisible)
	Integrated laser rangefinder	yes		
	Detection range, m	550		500
	Dimensions (without mount), mm	370 x 142 x 74		
	Weight (without mount), kg	1.1		

THERMAL
IMAGING

NEW

Thermal Imaging Front Attachment

KRYPTON

Thermal Upgrade

XG50 / FXG50



Highly Sensitive 640x480 pixel @ 12 μ m Thermal Imaging Sensor

For image acquisition KRYPTON uses high quality 12 μ m VOx thermal imaging sensor with 640x480 pixel resolution that offers exceptionally crisp, contrast image and excellent thermal sensitivity in all weather conditions.



High Definition Image

Sharp, richly contrasted thermal imaging for enhanced identification of animals, their extremities and even the smallest details, i.e. branches, leaves, grass and terrain.



Recoil Rated up to .375 H&H, 12-Gauge and 9.3x64

Recoil rated up to 6,000 joules for flawless performance on larger calibers up to .375 H&H, 12-gauge and 9.3x64.



Quick-release Adaptor with Precise Screen Positioning Mechanism in the Field of View of Day Optics

The attachment docks with front quick-release PSP adaptor * mount and can be easily put on the riflescope and taken off. The mount allows to perform precise alignment of attachment's field of view with central point of riflescope's field of view in order to achieve the optimal viewing position.

* bought separately



Detection Range Exceeding 2000m

Powerful objective lens in combination with professional grade 12 µm sensor thermal imaging sensor provides exceptional detection capabilities. A standard 1,8m tall object can be detected at a 2300 m) distance in complete darkness.



Point-of-Impact Stability

Krypton allows shooters to focus on quick target acquisition and shot placement in low-light environments without stressful, complex adjustments by utilizing a sequential layout of optical and electronic components designed to provide precise sight alignment and ultra-easy adjustability. Attachment's design ensures stability of the point-of-impact when re-focusing the attachment at various distances.



Benefits of Daylight Optics in the Nighttime

Krypton Attachment allows users to maintain the benefits of day optics in the nighttime. Advantages include: longer eye relief as compared to that in the night vision riflescopes, conventional shape of the aiming reticle, continuous zoom, quick conversion from day to thermal hunting mode, preserving shooting style.



Image Boost Technology

Pulsar's proprietary Image Boost Technology is comprised of software algorithms designed to increase imaging clarity and overall image detail. Image Boost results in a sharper, more detailed field of view and enhanced object identification capabilities.



Shockproof Magnesium Alloy Housing

Rugged and light-weight magnesium alloy housing is designed to withstand recoils of high caliber rifles. Increased structural rigidity reduces vibrations during the shot and leads to enhanced ballistics while properties of magnesium alloy help to ensure better heat dissipation.



HD AMOLED Display



Quality HD AMOLED display delivers crisp, richly contrasted, vivid image.

AMOLED technology ensures flawless, fluid, high-resolution

imaging and power saving.



Long Operation Time

Quick-change rechargeable battery packs provide enough power for non-stop operation up to 8 hours. On one battery pack the unit can run the whole night without the need to be replaced. Any ordinary power bank connected via Micro USB can be used as external power supply.



IPX7

IPX7 Waterproof Rated

IPX7 waterproof-rated for protection from heavy rainfall, snow or other precipitation. KRYPTON is designed to run flawlessly, even after submersion in up to 3 feet of water for up to 30 minutes.



Wireless Remote Control

The ergonomic Pulsar BT wireless remote control with encoder wheel puts the full range of Krypton operation at your fingertips when comfort and convenience means taking hands-off the controls.



Wide Range of Operating Temperatures (-25 to +50°C)

Housing, power unit, optics and electronics of Krypton are designed with regard to applications in wide range of temperatures. Krypton ensures reliable and effective performance in freezing cold up to -25°C.



⚡

Built-in Photo and Video Recorder with 16 GB Memory

The Built-in video recorder is a great asset when it comes to filming or taking photos of once-in-a-lifetime experiences. One press of the REC button captures footage that can be shared easily with colleagues, friends and family. 16 GB of internal memory provide many hours of recorded video and tons of photos. Recorded files can be later downloaded to PC or smartphone.



⚡

Krypton XG as Observation Device

The Krypton XG50 is a modular thermal imaging monocular consisting of a thermal imaging unit and a Pulsar 5x30B quick-release daylight monocular used as an eyepiece. With just one turn the hunter is able to release a fully-featured monocular of 5x magnification for natural daytime observation.

⚡

Software Evolution Support

A smartphone, free mobile application Stream Vision and Internet access is all one needs to check updates and to install new firmware. This allows a hunter to receive new features for Krypton he/she already owns.

⚡

Wi-Fi. Integration with IOS and Android devices with the help of free Stream Vision app

Built in Wi-Fi module provides connectivity of Krypton FXG50 attachment with Android or iOS smartphones and tablets with the help of free Stream Vision application. In combination with a smartphone thermal imager offers a set of unique features such as live image streaming to smartphone, transfer and sharing of multimedia files, firmware update, remote control of unit's settings and many other.



TECHNICAL SPECIFICATIONS	Model	FXG50	XG50
	SKU	76655	77375
	Objective lens	F50 / 1.2	
	Microbolometer resolution, pixels @ pixel pitch, μm	640 x 480 @ 12	
	Display, type & resolution, pixels	HD AMOLED 1746 x 1000	
	Magnifcation, x	-	5
	Field of view, °	8.7	8.7
	Range of detection, m	2300	
	Recommended magnifcation of the day scope / sight, x	1.5 – 6	-
	Power supply, V / Battery type	3.0 – 4.3 / IPS7 Battery Pack	
	Dimensions, mm	143 x 93 x 76	260 x 93 x 76

THERMAL
IMAGING

NEW

Thermal Imaging Front Attachment

PROTON

XQ30 / FXQ30

The
**NEXT LEVEL
OF THERMAL
PRECISION**

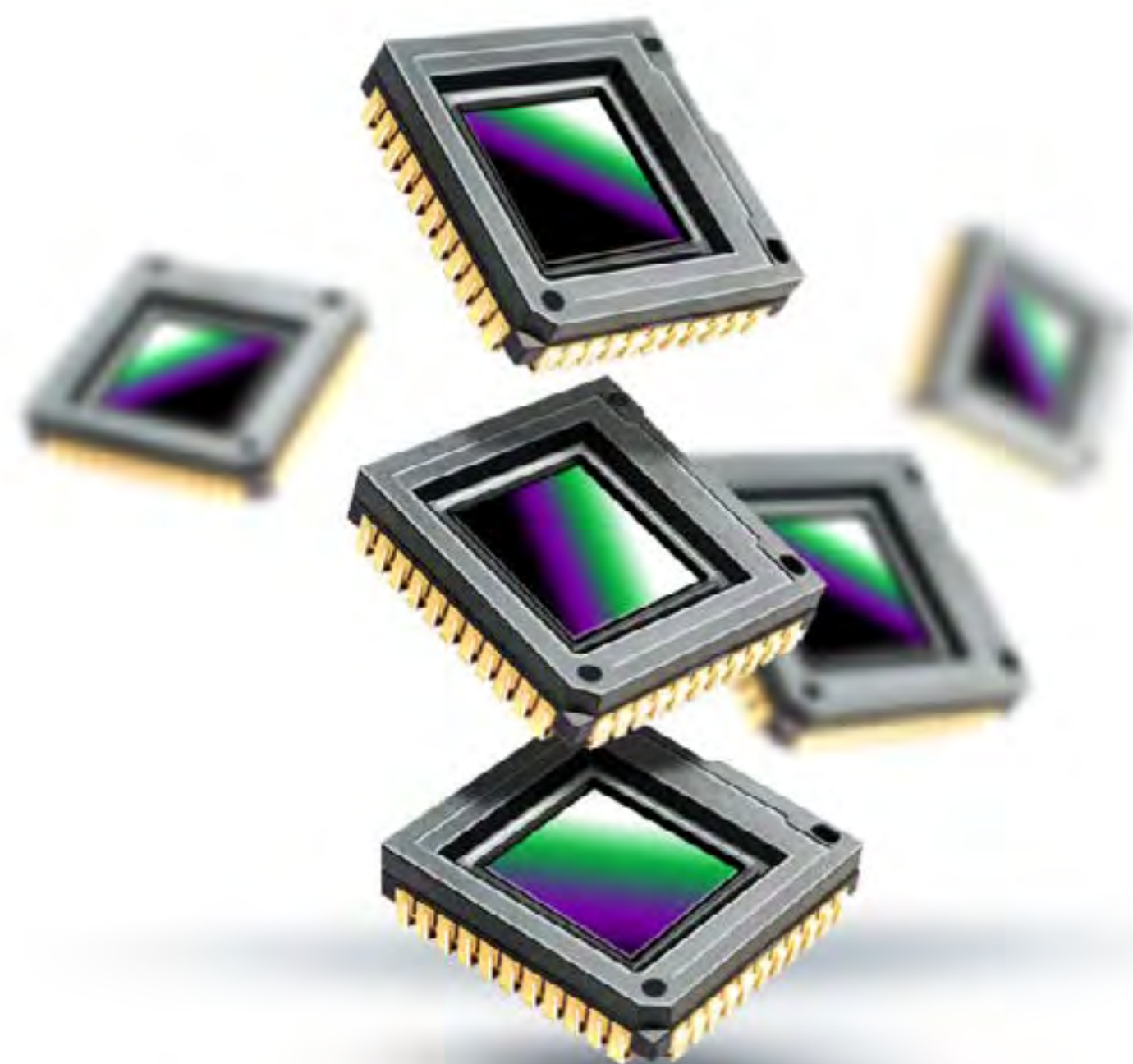


Light-weight and compact size

When stalking each extra gram of hunting equipment matters. Using the Proton is easy and intuitive regardless of which daytime optic it is connected to – an optical sight, a Pulsar 5x30B monocular, a spotting scope or binocular from the hunter's arsenal. The compact Proton thermal imaging module weighs just 370 grams – light enough not to have a meaningful effect on the balance of any daytime optic it is installed on.

⚡ Highly Sensitive Thermal Imaging Sensor <40^{NETD}mK

Thermal imaging sensor with NETD 40mK ensures perfect detail recognition even in the hardest weather conditions when thermal contrast is low. The smallest temperature differences will be clearly visible during the rainfall, fog or cold mornings in the most difficult conditions for thermal imager.



⚡ Shockproof Magnesium Alloy Housing

Rugged and light-weight magnesium alloy housing is de-signed to withstand recoils of high caliber rifles. Increased structural rigidity reduces vibrations during the shot and leads to enhanced ballistics while properties of magnesium alloy help to ensure better heat dissipation.

⚡ Quick-release Adaptor with Precise Screen Positioning Mechanism in the Field of View of Day Optics

The attachment docks with front quick-release PSP adaptor mount and can be easily put on the riflescope and taken off. The mount allows to perform precise alignment of at-tachment's field of view with central point of riflescope's field of view in order to achieve the optimal viewing posi-tion.

⚡ Image Detail Boost Function

Pulsar's proprietary Image Boost Technology is comprised of software algorithms designed to increase imaging clarity and overall image detail. Image Boost results in a sharper, more detailed field of view and enhanced object identifica-tion capabilities.

⚡ IPX7 Fully Waterproof

IPX7 waterproof-rated for protection from heavy rainfall, snow or other precipitation. The unit is designed to run flawlessly, even after submersion in up to 3 feet of water for up to 30 minutes.



Easy transformation into observation scope

Several seconds and 5x30B Pulsar monocular - all that is needed to take Proton off the riflescope and turn it into a thermal imaging spotter with 5x magnification. 5x30B monocular can be easily connected with Proton by means of bayonet connector. PSP adaptor used for mounting Proton on day optics can remain attached to Proton when paired with Pulsar 5x30 monocular. In the field it ensures fast and easy transformation of Proton from attachment into spotter and back.



Quick-change APS5 battery system

Quick-change high capacity rechargeable Li-Ion battery offers up to 6 hours of operation time on single charge. Fast and easy battery replacement ensures continuous observation without disruptions. Ordinary power bank connected via USB Type-C socket can be used as an external power source.



Wi-Fi. Integration with IOS and Android devices

Built in Wi-Fi module provides connectivity of Proton thermal attachment with Android or iOS smartphones and tablets with the help of free Stream Vision application. In combination with smartphone, thermal imager offers a set of unique features such as live image streaming to smartphone, transfer and sharing of multimedia files, firmware update, remote control of unit's settings and many other.



TECHNICAL SPECIFICATIONS	Model	FXQ30	XQ30
	SKU	76653	77378
	Objective lens	F30/1.2	
	Microbolometer resolution, pixels @ pixel pitch, µm	384x288 @ 17	
	Display, type & resolution, pixels	AMOLED HD 1024x768	
	Magnification, x	-	5x (with Pulsar 5x30 monocular)
	Field of view, °	12.4 / 21.8	
	Range of detection, m	900	
	Recommended magnification of the day scope / sight, x	1.5 - 4	-
	Power supply, V / Battery type	5 / Li-Ion APS5 Battery Pack	
	Pulsar 5x30B monocular included	no	yes
	Dimensions, mm	119x58x75	248x59x75 (with Pulsar 5x30 monocular)



DIGITAL
NIGHT VISION

Digital NV Scopes & Front Attachments

FORWARD

F455S / FN455S



Nighttime Shooting Advantages

Using the Forward F Attachment includes several benefits over night hunting with traditional optics or even night vision devices. Attaching the Forward F to a traditional scope delivers the same creature comforts of shooting with day optics you are accustomed to, including your existing reticle and eye relief. The Forward F even allows you to continue utilizing your riflescope's variable magnification.



Point-of-Impact Stability

Forward F allows shooters to focus on quick target acquisition and shot placement in low-light environments without stressful, complex adjustments by utilizing a sequential layout of optical and electronic components designed to provide precise sight-alignment and ultra-easy adjustability.



Simple Mounting

To install the Forward F onto the front optical bell of a day telescopic sight or spotting scope, specially designed mounting assemblies (bought separately) are used. The assemblies are the adapters with various diameters with a set of reducing rings (the rings can be used as necessary depending on the diameter of the optical bell). The adapter is permanently attached to the optical bell of a telescopic sight. This allows the Forward F attachment to be quickly installed in front of the lens for nighttime shooting. When the attachment is not used, the adapter accommodates a protective cap that covers the lens of an optical sight in the daytime.



Built-In Video Recorder

Capturing still images and video is seamless with the Forward F's built-in video recorder. Image and video content is stored internally and can easily be transferred to PC/laptop via wired connection or Wi-Fi.



High Shock Resistance

The Forward F features exceptionally high shock resistance, capable of handling high-powered firearm recoil, up to .375-cal., including smoothbore and airsoft.





Wireless remote control

The ergonomic Pulsar BT wireless remote control with encoder wheel puts the full range of Forward operation at your fingertips when comfort and convenience means taking hands-off the controls



HD-Sensor

The highly sensitive CMOS sensor featuring 1280x720 HD resolution delivers a high definition image with precise detail rendering.



Powerful Invisible IR Illuminator

The Forward S is supplied with a new detachable high power invisible IR illuminator (940 nm). Three adjustable IR power levels help choose preferred effective range and illumination level of an object observed. Design of the illuminator allows spot position to be corrected in the field of view horizontally and vertically.



B-Pack Power Supply

Forward F includes a progressive autonomous B-Pack power supply consisting of a quick-detach, rechargeable IPS7, 6.4 Ah battery pack designed to deliver over 7 hrs. of operation on maximum mode. Quick-release and wireless design, long operating time are the major highlights of this power system.



Forward FN as Observation Device

The Pulsar 5x30 monocular (#71011) included in the package can be attached to the Forward FN digital module and used as a 5x power NV device. Along with this, the Pulsar 5x30 is a fully-functional observation device.



Wi-Fi. Integration with IOS and Android devices

Built in Wi-Fi module provides connectivity of Forward F attachment with Android or iOS smartphones and tablets with the help of free Stream Vision application. In combination with a smartphone Forward F offers a set of unique features such as live image streaming to smartphone, transfer and sharing of multimedia files, firmware update, remote control of unit's settings and many other.



TECHNICAL SPECIFICATIONS	Model	F455S	FN455S
	SKU	78189	78199
	Sensor type / resolution, pixels	CMOS 1280x720	
	Objective lens	F50/1.0	
	Magnification, x	-	5
	Field of view, °	6.3	
	Recommended magnification of the day sight / scope, x	2 – 8	-
	IR Illuminator type / wavelength, nm	LED / 940 (invisible)	
	Weight (with IPS7 battery pack), kg	0.83	1.03 (with Pulsar 5x30 monocular)

THERMAL
IMAGING



< **25^{NETD}mK**
Helion 2 Pro Series

< **40^{NETD}mK**
Helion 2 Series

Thermal Imaging Monoculars

NEW **HELION 2**

The
NEXT LEVEL
OF THERMAL
SPOTTING

XQ38F / XQ50F / XP50 / XP50 PRO

NEW HELION 2

XP50 PRO



Unprecedented Thermal Sensitivity <25 mK NETD

Thermal imaging sensor with NETD <25mK ensures perfect detail recognition even in the hardest weather conditions when thermal contrast is low. The smallest temperature differences will be clearly visible during the rainfall, fog or cold mornings in the most difficult conditions for thermal imager.

High Definition Thermal Sensor 640x480 pixel @ 17 μ m

Sharp, richly contrasted thermal imaging for enhanced identification of animals, their extremities and even the smallest details, i.e. branches, leaves, grass and terrain.

⚡ Large aperture lenses

The characteristics of thermal imaging optics have a decisive influence on a thermal imager's ability to capture even the lowest radiation levels. Ultimate detection efficiency is achieved with the fast lenses of the Helion 2 XQ38F (F35/1.0), Helion 2 XQ50F and Helion 2 XP50 Pro (F50/1.0) thermal imagers in combination with highly sensitive thermal sensors. The Helion 2 XQ / XP Pro models give users the best quality, most detailed & high-contrast, informative imagery every time, even during rain or fog, when the temperature contrast of the observed scene is minimal.

⚡ Ultra-high-strength magnesium alloy housing

The lightweight magnesium alloy housing stands out due to a high structural strength and resistance to external mechanical and climatic loads. The housing material effectively removes and dissipates the heat generated by the electronics, ensuring the operational stability of the thermal imager and maintains a high quality image during prolonged observation.



⚡ Wi-Fi. Integration with IOS and Android devices

Built-in Wi-Fi module provides connectivity of Helion 2 with Android or iOS smartphones or tablets. The smartphone and thermal imager combination offers a set of unique features such as direct image streaming, downloading and sharing recorded files, firmware update capabilities and many others.



⚡ Detects up to 1800 m Away

Depending on model, the Helion 2 is capable of detecting an average human-size target, dressed in outerwear, against a forest backdrop, at a range up to 1800 meters.

⚡ Full colour HD AMOLED display



The new 1024x768 HD AMOLED display has improved colour rendering, is power saving, offers high contrast imagery and a quick-response, as well as providing clear & smooth images when observing on-the-move or in cold conditions.

Image Detail Boost Function

The Helion 2 produces clear, high contrast images with precise tracing of contours and informative visualization of the smallest objects and areas with minimal temperature differences. A hunter is able to clearly identify objects, both target and background, as well as accurately evaluate the trophy.



Built-in Photo and Video Recorder with 16 GB memory

The Built-in video recorder is a great asset when it comes to filming or taking photos of once-in-a-lifetime experiences. One press of the REC button captures footage that can be shared easily with colleagues, friends and family. 16 GB of internal memory provide many hours of recorded video and tons of photos.



8 Color palettes

A choice of 8 colour palettes lets the user observe their field of view more effectively, allowing them to optimise the unit for specific tasks as well as react to changing observation conditions. White Hot, Black Hot and Red Hot are optimal for object detection, Rainbow and Ultramarine help increase chances for recognition & identification. Red Monochrome, Sepia and Violet are most suitable for long observation in the night.



Wide Range of Operating Temperatures (-25 to +50°C)

Housing, power unit, optics and electronics of Helion 2 are designed with regard to applications in wide range of temperatures. Helion ensures reliable and effective performance in freezing cold up to -25°C.



IPX7 Waterproof Rated

IPX7 waterproof-rated for protection from heavy rainfall, snow or other precipitation. The unit is designed to run flawlessly, even after submersion in up to 1 meter of water for up to 30 minutes.



Quick-change High Capacity Battery (up to 8 hrs. of Operation Time)

Quick-change rechargeable battery packs provide enough power for up to 8 hours of non-stop operation. On one battery pack the unit can run the whole night without the need to be replaced. Any ordinary power bank connected via Micro USB can be used as external power supply. The IPS14 Battery Pack, available as a separate item, provides up to 16 hrs. of operation time. A battery cradle for LR6 (AA) batteries is an optional accessory.



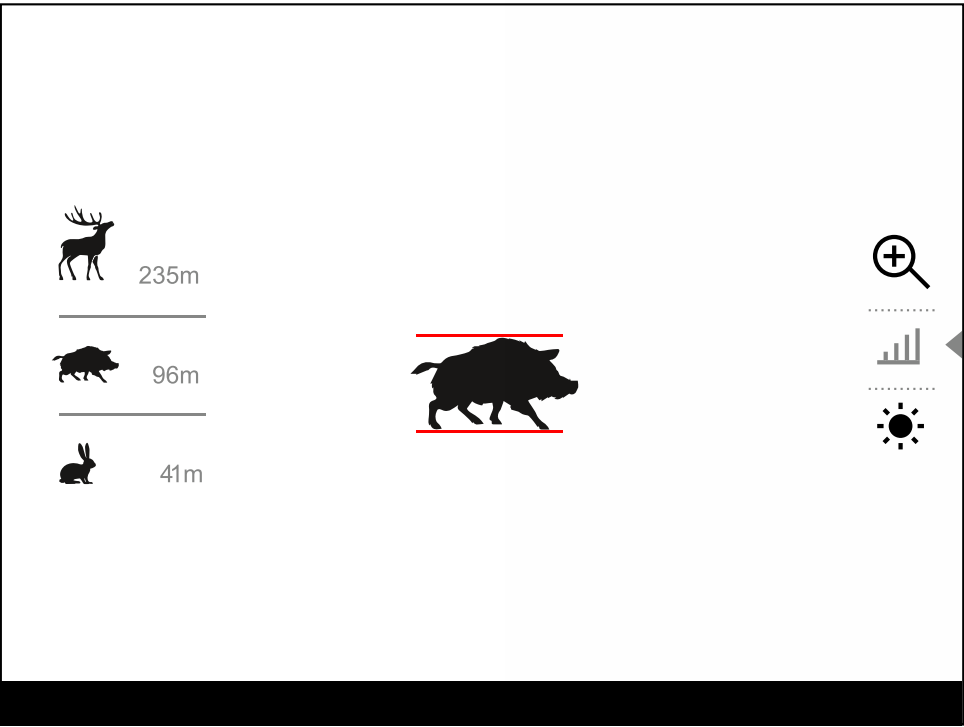
Picture-in-Picture Function

Picture-in-picture displays a magnified image at the top-center 10% of the overall field of view for precise zooming on an object of interest.



Stadiametric Rangefinder

The stadiametric rangefinder is a dynamic rangefinding scale intended to help determine approximate range to objects with known height 1.7 m (deer), 0.7m (wild boar) and 0.3 m (rabbit).



Variable Magnification

Digital zoom, up to 8x depending on model, provides improved focus and better overall object recognition at significant distances. The zoom changes either gradually in 2x step or continuously for a truly optimum, customized field of view for specific situation.



TECHNICAL SPECIFICATIONS	Model	XP50 PRO	XP50	XQ50F	XQ38F
	SKU	77431	77402	77397	77396
	Microbolometer, resolution, pixels @ pixel pitch, μm	640x480 @ 17		384x288 @ 17	
	Sesnor NETD value, mK	<25		<40	
	Display, type / resolution, pixels	AMOLED 1024x768	AMOLED 640x480	AMOLED 1024x768	
	Objective lens	F50/1.0	F50/1.2	F50/1.0	F35/1.0
	Magnifcation, x	2.5 – 20		4.5 – 18	3 – 12
	Field of view (horizontal), °	12.4		7.5	10.7
	Range of detection, m	1800		1350	
	Body material	Magnesium Alloy	Armored plastic	Magnesium Alloy	
	Dimensions, mm	242 x 75 x 60	234 x 55 x 58	242 x 75 x 60	226 x 55 x 58
	Weight, kg	0.5		0.45	

THERMAL
IMAGING

< **40**^{NETD}**mK**



Thermal Imaging Monoculars
AXION XQ

The
NEXT LEVEL
OF THERMAL
SPOTTING

XQ38 / LRF XQ38

⚡ Built-In Precision Laser Rangefinder

Integrated, precision laser rangefinder provides accurate rangefinding in two modes – Single Time Measurement and Scanning mode with ± 1 m accuracy up to 1 km distance. Accurate distance readings help to quickly assess the size of territory, distance and relief.



AXION XQ LRF

⚡ Highly Sensitive Thermal Imaging Sensor

The Axion XQ's 384x288 @ 17 μ thermal imaging sensor with NETD <40 mK ensures perfect detail recognition even in the hardest weather conditions when thermal contrast is low. The smallest temperature differences will be clearly visible during the rainfall, fog or cold mornings in the most difficult conditions for thermal imager.

⚡ Long Detection Range

A powerful objective lens combined with a 17 μ m professional-grade thermal imaging sensor provides exceptional detection capabilities. A standard 1.8 m tall object can be detected up to 1350 m away in complete darkness.

⚡ Observation Modes

Image optimization should be performed depending on the environmental location and conditions. Mountains, cities and forests have different ambient temperatures. In order to achieve the highest possible image quality, certain settings have been optimized and gathered into profiles. As a result, optimized imaging in various conditions is easier. Identification preset is another optimal-imaging option that makes identifying easier, even at longer distances.

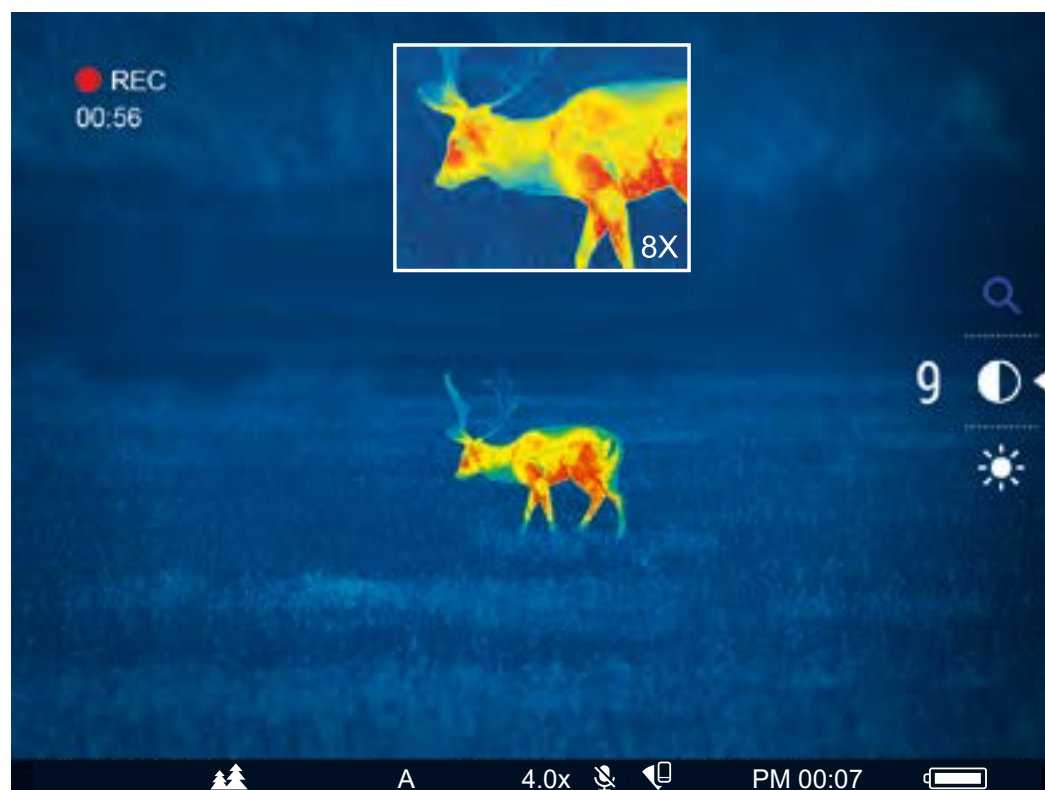
⚡ Image Boost Technology

Pulsar's proprietary Image Boost Technology is comprised of software algorithms designed to increase imaging clarity and overall image detail. Image Boost results in a sharper, more detailed field of view and enhanced object identification capabilities.





Picture in Picture Function



Upon activation Picture in Picture function displays second small image with magnification in the top part of the screen. Small image helps to zoom in on a target while retaining the rest of the field of view visible.



Color Palettes

The 8-color palette enhances viewing in varying conditions. While the classic White Hot mode is exceptionally versatile, Hot Black is often favored for detecting wildlife at night. Red Monochrome helps to reduce or prevent bright backlight from exiting the eyepiece. Sepia often improves long-range observation while Red Hot, Rainbow and Ultramarine enhance temperature differences of various object attributes. Violet helps to identify objects faster.



Light-weight and Rugged Magnesium Alloy Housing

Housing made from lightweight magnesium alloy ensures high structural rigidity and ruggedness. Small weight and compact size of the monocular makes it a perfect option for long outdoor trips when light yet capable unit is necessary.



Video and Still-Photo Recording

The Built-in video recorder is a great asset when it comes to filming or taking photos of once-in-a-lifetime experiences. One press of the REC button captures footage that can be shared easily with colleagues, friends and family. 16 GB of internal memory provide many hours of recorded video and tons of photos.



Instant Start-up

Thanks to revolutionary electronics, the Axion can be powered up almost instantly. Quick start-up increases battery life and prolongs overall operation time. With instant start-up capability, the unit can be powered rapidly activated when seconds count.



B-Pack Mini Power System

Miniature power elements used in Axion models provide sufficient operation time and can be quickly replaced. B-Pack mini batteries can be quickly charged either with included charger station or in the unit connected to USB.



IPX7 Waterproof Rated

IPX7 waterproof-rated for protection from heavy rainfall, snow or other precipitation. The Axion is designed to run flawlessly, even after submersion in up to 1 meter of water for up to 30 minutes.



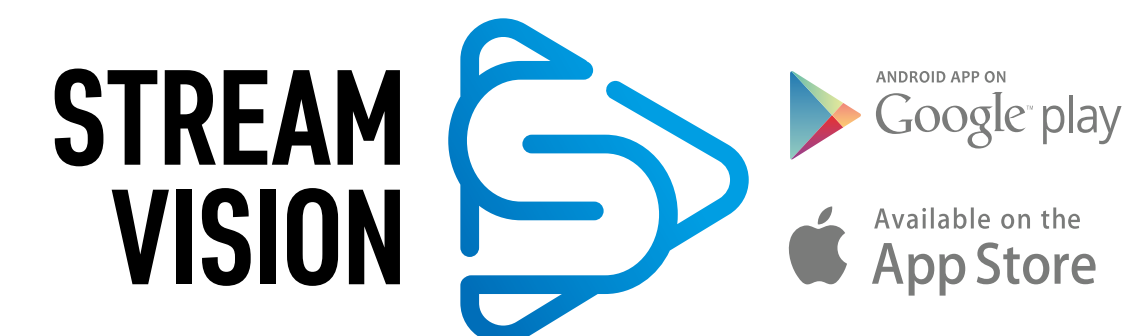
HD AMOLED Microdisplay

New HD display delivers crisp, richly contrasted, vividly colored field of view, AMOLED technology ensures flawless, fluid, high-resolution imaging and power saving.



Stream Vision App Supported

Built in Wi-Fi module provides connectivity of Axion with Android or iOS smartphones or tablets. The smartphone and thermal imager combination offers a set of unique features such as direct image streaming, downloading and sharing recorded files, firmware update capabilities and many others.



THERMAL
IMAGING

Thermal Imaging Monoculars
AXION

XM30S / KEY XM22 / KEY XM30



AXION XM30S.
High Optic Magnification

Axion XM30S offers the highest magnification in the class of compact thermal imagers. Considerable optic magnification can be increased by means of digital zoom to provide the best identification of observed objects.

AXION XM30S Main Features

- 12 µm Thermal Imaging Sensor
- HD AMOLED Microdisplay
- Detection Range up to 1300 m
- Smooth Zoom from 4.5x to 18x
- Rugged Magnesium Alloy Housing
- Four-second Start-up Time
- Video and Still-Photo Recording
- Preset Viewing Modes
- WiFi. Integration with iOS and Android Devices
- IPX7 Waterproof Rated
- B-Pack Mini Power System
- Operating Temperatures -25 °C to +40 °C
- Remote Firmware Update
- Compact & Lightweight

AXION KEY XM22 / KEY XM30.
Light Weight

Small weight becomes important when outdoor trip is long and each piece of equipment adds to a total load that has to be carried on the back. Axion XM weighs around 250 grams not more than a regular rangefinder unit but offers far more significant capabilities.

AXION KEY XM22 / KEY XM30
Main Features

- 12 µm Thermal Imaging Sensor
- Rugged Magnesium Alloy Housing
- Compact & Lightweight
- Easy in Operation
- Preset Viewing Modes
- Color Palettes
- IPX7 Waterproof Rated
- B-Pack Mini Power System

TECHNICAL SPECIFICATIONS	Model	XQ38	LRF XQ38	XM30S	KEY XM22	KEY XM30
	SKU	77427	77428	77423	77424	77425
	Microbolometer, resolution, pixels @ pixel pitch, µm	384x288 @ 17		320x240 @ 12		
	Display, type / resolution, pixels	AMOLED 1024x768			LCOS / 960x720	
	Objective lens	F38/1.2		F30/1.2	F22/1.2	F30/1.2
	Magnification, x	3.5 – 14		4.5 – 18	2 – 8	2.5 – 10
	Range of detection, m	1350		1300	950	1300
	Built-in video & sound recorder	yes	no	yes	no	no
	Stream Vision compatibility	yes	no	yes	no	no
	Integrated laser rangefinder	no	yes	no	no	no
Operating temperature, °C		-25 to +40			-10 to +40	
Weight, kg		0.35	0.45	0.25	0.23	0.25

THERMAL
IMAGING

NEW

Thermal Imaging Binoculars

ACCOLADE

LRF XP50

2 PRO

SERIES

The
**NEXT LEVEL OF
THERMAL IMAGING**

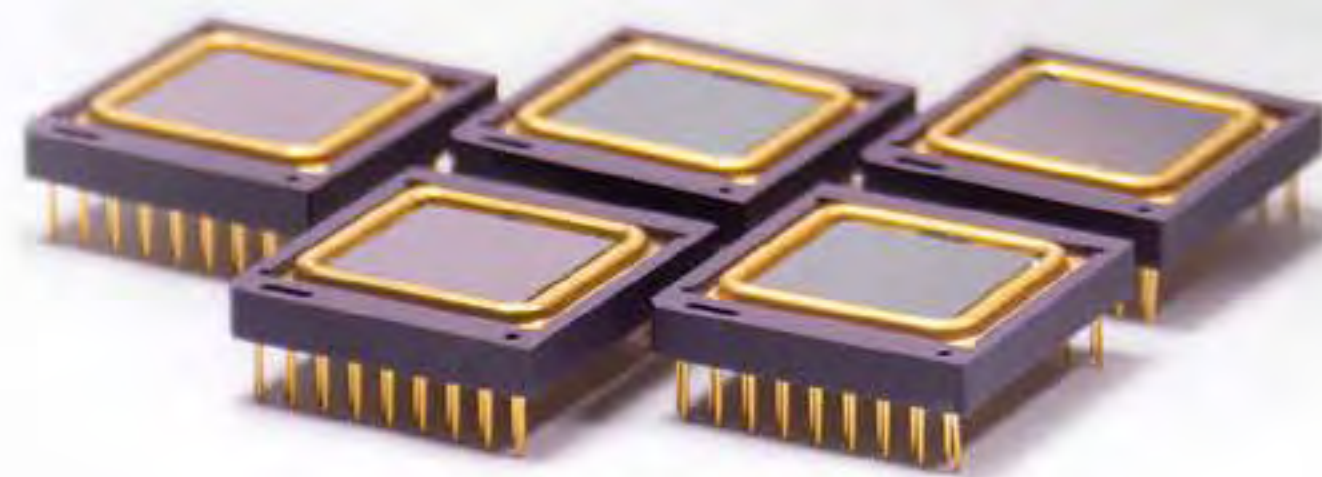
<25^{NETD}mK

Unprecedented Thermal Sensor Sensitivity

Thermal imaging sensor with NETD <25mK ensures perfect detail recognition even in the hardest weather conditions when thermal contrast is low. The smallest temperature differences will be clearly visible during the rainfall, fog or cold mornings in the most difficult conditions for thermal imager.

640x480 pixel @ 17 μm High Definition Thermal Sensor

Sharp, richly contrasted thermal imaging for enhanced identification of animals, their extremities and even the smallest details, i.e. branches, leaves, grass and terrain.



Comfortable for Long Observation

The dual eyepiece configuration reduces eye fatigue during longer viewing and enhances the natural look of objects. The human brain is pre-conditioned to receive visual information from two channels simultaneously. The brain then combines the information into a single image. When one eye is used to observe, the brain only receives information a single input. The increased effort from the brain to override the standard algorithm of visual perception can quickly lead to the observer feeling fatigued and uncomfortable.



Long Detection Range up to 1800 m

A powerful long-distance objective lens combined with a 640x480@17 μm highly-sensitive thermal imaging sensor provides exceptional detection capabilities. A standard 1.8m tall object can be detected up to 1800 m away in complete darkness.

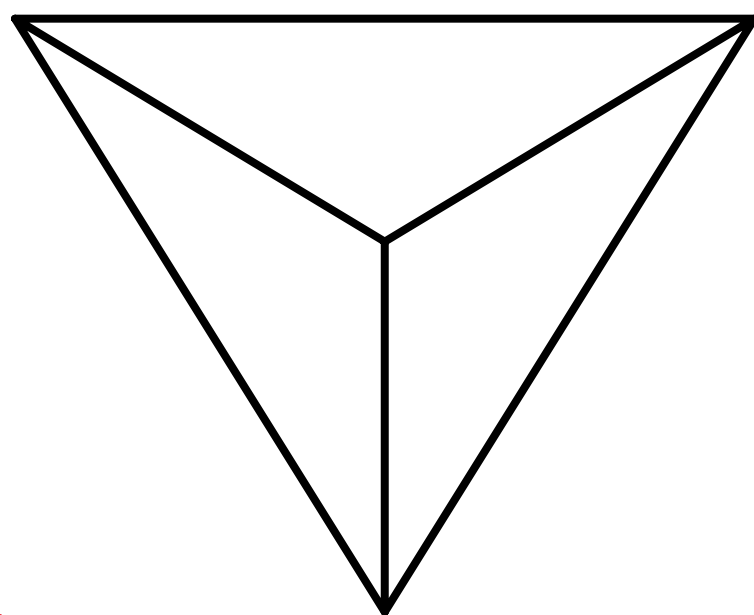


Image Detail Boost Function

The Accolade 2 LRF XP50 Pro produces clear, high contrast images with precise tracing of contours and informative visualization of the smallest objects and areas with minimal temperature differences. A hunter is able to clearly identify objects, both target and background, as well as accurately evaluate the trophy.



Frost-resistant AMOLED Display



The frost-resistant AMOLED display has improved colour rendering, is power saving, offers high contrast imagery and a quick-response, as well as providing clear & smooth images when observing on-the-move or in cold conditions.



Built-in Precise Laser Rangefinder

Understanding target distance is an essential factor in correct decision-making. A built-in laser rangefinder with a range of up to 1 kilometer enables measuring distances in single measurements and continuous scanning modes with an accuracy of ± 1 meter for quick and error-free assessment of the situation.



2.5x-20x Variable Magnification

Digital zoom, up to 8x, provides improved focus and better overall object recognition at significant distances. The zoom changes either gradually in 2x step or continuously for a truly optimum, customized field of view for specific situation.



Built-in Photo and Video Recorder with 16 GB memory

The Built-in video recorder is a great asset when it comes to filming or taking photos of once-in-a-lifetime experiences. One press of the REC button captures footage that can be shared easily with colleagues, friends and family. 16 GB of internal memory provide many hours of recorded video and tons of photos.





⚡ Variable Interpupillary Distance

The ability to adjust the distance between eyepieces allows the user to best position the optic for individual needs. Interpupillary distance differs from person to person. Adjusting for individual fit dramatically improves viewing comfort and quality, and eliminates the potential for double-imaging.

⚡ 8 Color palettes

A choice of 8 colour palettes lets the user observe their field of view more effectively, allowing them to optimise the unit for specific tasks as well as react to changing observation conditions. White Hot, Black Hot and Red Hot are optimal for object detection, Rainbow and Ultramarine help increase chances for recognition & identification. Red Monochrome, Sepia and Violet are most suitable for long observation in the night.

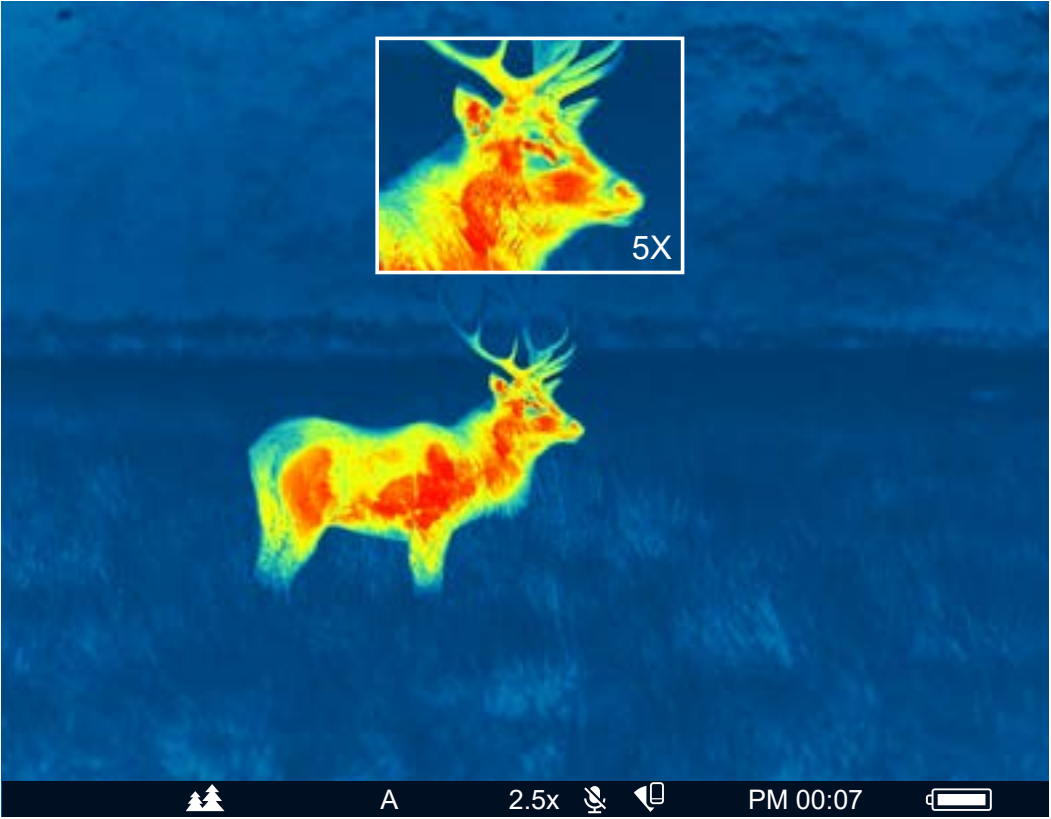


⚡ Quick-change High Capacity Battery (up to 9 hrs. of Operation Time)

Quick-change rechargeable battery packs provide enough power for up to 9 hours of non-stop operation. On one battery pack the unit can run the whole night without the need to be replaced. Any ordinary power bank connected via Micro USB can be used as external power supply. The IPS14 Battery Pack, available as a separate item, provides up to 18 hrs. of operation time. A battery cradle for LR6 (AA) batteries is an optional accessory.

⚡

Picture-in-Picture Function



Picture-in-picture displays a magnified image at the top-center 10% of the overall field of view for precise zooming on an object of interest.

⚡

IPX7

IPX7 Waterproof-rated

IPX7 waterproof-rated for protection from heavy rainfall, snow or other precipitation. The unit is designed to run flawlessly, even after submersion in up to 1 meter of water for up to 30 minutes.

⚡

Wide Range of Operating Temperatures (-25 to +50°C)

Housing, power unit, optics and electronics of Accolade 2 LRF XP50 Pro are designed with regard to applications in wide range of temperatures. Accolade ensures reliable and effective performance in freezing cold up to -25°C.

⚡

Wi-Fi. Integration with IOS and Android Devices

Built in Wi-Fi module provides connectivity of Accolade 2 LRF XP50 Pro with Android or iOS smartphones or tablets. The smartphone and thermal imager combination offers a set of unique features such as direct image streaming, downloading and sharing recorded files, firmware update capabilities and many others.

STREAM VISION



ANDROID APP ON

Google play

Available on the

App Store



TECHNICAL SPECIFICATIONS	Model	2 LRF XP50 PRO
	SKU	77461
	Microbolometer, resolution, pixels @ pixel pitch, μm	640x480 @ 17
	Display, type / resolution, pixels	AMOLED 640x480
	Objective lens	F50/1.2
	Magnification, x	2.5 – 20
	Integrated laser rangefinder	yes
	Field of view, horizontal x vertical without zoom, °	12.4 x 9.3
	Range of detection, m	1800
	Weight, kg	0.7



ACCESSORIES

Thermal Imaging Lenses

Interchangeable objective lenses for Helion XP series.



79054 F38 Thermal Imaging Lens

F38/1.2. Provides magnification 1.9 - 15.2x and detection distance up to 1350 m. Quick bayonet mounting. Waterproof.



79055 F50 Thermal Imaging Lens

F50/1.2. Provides magnification 2.5 - 20x and detection distance up to 1800 m. Quick bayonet mounting. Waterproof.

Attachable Infrared Illuminators

Powerful interchangeable infrared flashlights for digital night vision riflescopes Digisight Ultra N450/N455, Digisight Ultra N450/N455 LRF, digital NV attachments Forward F455 with adjustable power and precise setting of spot position in the field of view.



79191 Pulsar Ultra - X850A

LED 850 nm. Long range.

79192 Pulsar Ultra - X940A

LED 940 nm. Invisible range.

External Infrared Illuminators

Interchangeable infrared illuminators for Digex digital night vision riflescopes. Smooth power adjustment. Adjustable IR spot position. Mounting diameter 30 mm.



79077 Pulsar Digex-X850

LED 850 nm. Long range.

79078 Pulsar Digex-X940

LED 940 nm. Invisible range.

Pulsar Riflescopes Rifle Mounts

The mounting holes in the base of Pulsar riflescopes enables the mount to be installed in multiple positions for a customized fit and improved eye relief.



79045 Weaver Rifle Mount

Designated for installation on riflescopes utilizing Weaver or Picatinny rails. Total length 173 mm. Length of mounting part 112 mm. Distance between the centers of locking screws 87 mm.



79046 MAK Adapter

Enables installation compatibility with monoblock MAK mounts (MAK Milmont, MAK Flex and others).



79047 Prism 14/200 Rifle Mount

Enables installation compatibility with monoblock MAK mounts (MAK Milmont, MAK Flex and others).



79048 Los/Dovetail Rifle Mount

Allows installation of riflescopes on carbines “Los 7-1”, “Los 4”, “Bars 4-1” and other weapons manufactured in Russia and Europe, that have upper mount “dovetail”.

Pulsar Riflescopes Rifle Mounts

The mounting holes in the base of Pulsar riflescopes enables the mount to be installed in multiple positions for a customized fit and improved eye relief.



79177 Weaver SQD Rifle Mount

Secure quick-release mount with additional locking screws for installation on riflescopes utilizing Weaver or Picatinny rails.Total length 204 mm. Length of mounting part 145 mm. Distance between the centers of locking screws 120 mm.



79129 CZ550 Rifle Mount

Quick-release mount. Allows the installation of a device on a CZ-550 carbine.

FN Cover Ring Adapters

Cover ring adapters enable installation of Forward F attachments in front of traditional optics (riflescopes, spotting scopes and binoculars). Adapters are supplied with a set of insert rings (choice of appropriate rings is determined by the outer diameter dimension of the day optic’s objective housing). Once installed, the ring adapter remains on the day optic’s bell for quick installation and removal of Forward F devices. When Forward F device is not in use the attached adapter also holds an included lens cover to protect your day optics.



79127 FN 42 mm Cover Ring Adapter

4-point quick bayonet mounting.
Compatible with a wide range of day optics with the 40 - 42 mm objective lens.
45.5 mm, 46 mm, 46.5 mm, 47 mm, 48 mm, 49 mm, 50 mm insert rings included.
For use with Forward F models.



79128 FN 50 mm Cover Ring Adapter

4-point quick bayonet mounting.
Compatible with a wide range of day optics with the 50 mm objective lens diameter.
51.6 mm, 53.4 mm, 55 mm, 56 mm, 57 mm, 58 mm, 59 mm insert rings included.
For use with Forward F models.



79129 FN 56 mm Cover Ring Adapter

4-point quick bayonet mounting.
Compatible with a wide range of day optics with the 56 mm objective lens diameter. 60 mm, 61 mm, 62 mm, 63 mm, 64 mm, 65 mm insert rings included.
For use with Forward F models.

PSP Ring Adapters

PSP Ring Adapters enable installation of Krypton / Proton thermal devices in front of daylight optics (sights, spotting scopes and binoculars). Thermal imaging attachment mounted on daylight optics using a quick release PSP adapter can be removed and installed within seconds. The precise screen positioning mechanism enables the perfect alignment of the thermal or night vision image in the field of view of daylight optics for maximum viewing comfort.

79174 PSP-42 Ring Adapter

Compatible with a wide range of day optics with the 40 - 42 mm objective lens. 45.5 mm, 46 mm, 46.5 mm, 47 mm, 48 mm, 49 mm, 50 mm insert rings included.

79175 PSP-50 Ring Adapter

Compatible with a wide range of day optics with the 50 mm objective lens diameter. 51.6 mm, 53.4 mm, 55 mm, 56 mm, 57 mm, 58 mm, 59 mm insert rings included.

79176 PSP-56 Ring Adapter

Compatible with a wide range of day optics with the 56 mm objective lens diameter. 60 mm, 61 mm, 62 mm, 63 mm, 64 mm, 65 mm insert rings included.



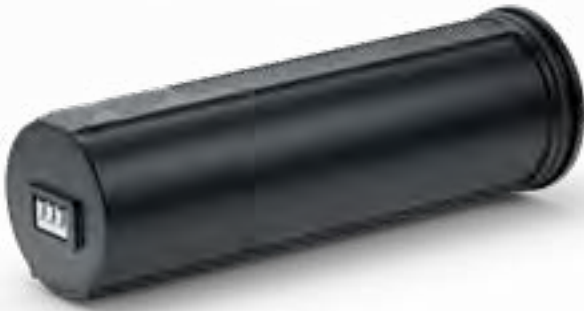
APS Power Supplies

Interchangeable standard power supplies for Axion, Thermion, Digex and Proton.



79162 Battery Pack APS 2

Capacity 2 A•h.
Compatible with Thermion / Digex / Digex IR illuminators.



79161 Battery Pack APS 3

Capacity 3.2 A•h.
Compatible with Axion XM / Thermion / Digex.



79181 Battery Pack APS 5

Capacity 4.8 A•h.
Compatible with Axion XQ / Proton.



79165 APS Battery Charger

Intended for charging the APS2 / APS3 battery packs.



79182 APS5 Battery Charger

Intended for charging the APS5 battery packs.

External Power Supplies

Compared to standard batteries, external power supplies feature greater capacity and dramatically increase operation times.



79110 Pulsar PB8I Power Bank

Capacity 8 A•h, Weaver mount, waterproof (IPX7), output voltage 5 V, battery level indicator. Compatible with Thermion / Trail / Core (via Core External Power Adapter) / Axion XM / Helion / Accolade / Digex / Digisight Ultra.

IPS Power Supplies

Interchangeable standard power supplies for Trail / Helion / Accolade / Digisight Ultra / Krypton / Forward.



79166 Battery Pack IPS 7

Capacity 6.4 A•h.
Operating time 10-13 h (with Helion).



79169 Battery Pack IPS 7A

Capacity 6.4 A•h.
Operating time 5-7 h.
Only for use with Digisight Ultra LRF.



79168 Battery Pack IPS 14

Capacity 12.8 A•h.
Operating time 21-26 h (with Helion).
Not recommended for use with Krypton / Forward.



79119 BPS 3xAA Battery Holder

Capacity 1.5 - 2 A•h (rechargeable batteries).
Operating time 2 - 3 h.
Not for use with Digisight Ultra / Forward F.



79164 IPS Battery Charger

Intended for charging the
IPS5 / IPS7 / IPS7A / IPS10 / IPS14 battery packs.

Other Accessories



79081 Pulsar Neck Strap

Designed for use with Pulsar devices with ¼-inch tripod sockets, the Pulsar Neck Strap keeps your hands free and optic at the ready, and provides the peace-of-mind you want in case you lose your grip during operation. The neck strap is adjustable for more comfortable carry on the neck or shoulder.

79082 Pulsar Single-point neck strap

Strap for carrying optical devices having an eyelet for attaching the strap (Axion, Helion thermal imaging monoculars). A steel carabiner is used to fasten the strap to the device.



79142 Pulsar BT Wireless Remote Control

The ergonomic, wireless remote control, with encoder wheel, puts the full range of device's capabilities at your fingertips for comfortable, convenient, hands-off operation. Compatible with Forward F/FN 400th, Krypton XG/FXG, Proton XQ/FXQ monoculars & front attachments.

79152 Pulsar Flat Glass Mount

The Flat Glass Mount enables devices equipped with a ¼" tripod mount to be installed securely to flat surfaces, including automobile windows, glass, tile, polished metal, plastic, etc. The Flat Glass Mount can be mounted vertically or horizontally. The swiveling tripod head includes a quick-release plate with a standard ¼" mounting screw.



79155 Pulsar Tree Mount

Pulsar optics weighing under 1 kg are safe and secure, even when mounted on a tree. The Pulsar Tree Mount includes a swiveling tripod head with ¼-inch mounting screw, quick-release plate and a strap-attachment system, perfect for trees with a diameter under 50 cm.



79156 Pulsar Window Frame Mount

The Pulsar Window Frame mount enables quick, easy mounting of optics on outside surfaces, including PVC and standard windows. The Window Frame Mount includes a swiveling tripod head with ¼-inch mounting screw and a quick-release plate.



79154 Pulsar C-clamp Mount

Attached to your optic via a ¼-inch mounting screw and quick-release plate, the Pulsar C-clamp Mount enables tripod head convenience on less traditional surfaces like crossbars, beams, handrails, etc.



79151 Helion Flip-Up Phone Mount

Our Flip-Up Phone Mount allows your WiFi-connected smartphone to attach to the Helion as an outer display.




71013 Monocular Pulsar 5x30B


The Pulsar 5x30B monocular can be attached to the Krypton / Proton thermal unit and used as a 5x power thermal monocular. Along with this, the Pulsar 5x30B is a fully-functional daylight observation device.



Yukon Advanced Optics Worldwide

 pulsar-vision.com

 [@PulsarVision](https://www.facebook.com/PulsarVision)

 [Pulsar Vision](https://www.youtube.com/PulsarVision)

 [@pulsar.vision](https://www.instagram.com/pulsar.vision)